



Cooper-Young • Memphis, TN

We do more than soup!

Try our Sandwiches, Salads,
Plate Lunches, and Breakfasts!

Open 7am - 3pm Tues. thru Thur.

7am - 9pm Fri. & Sat.

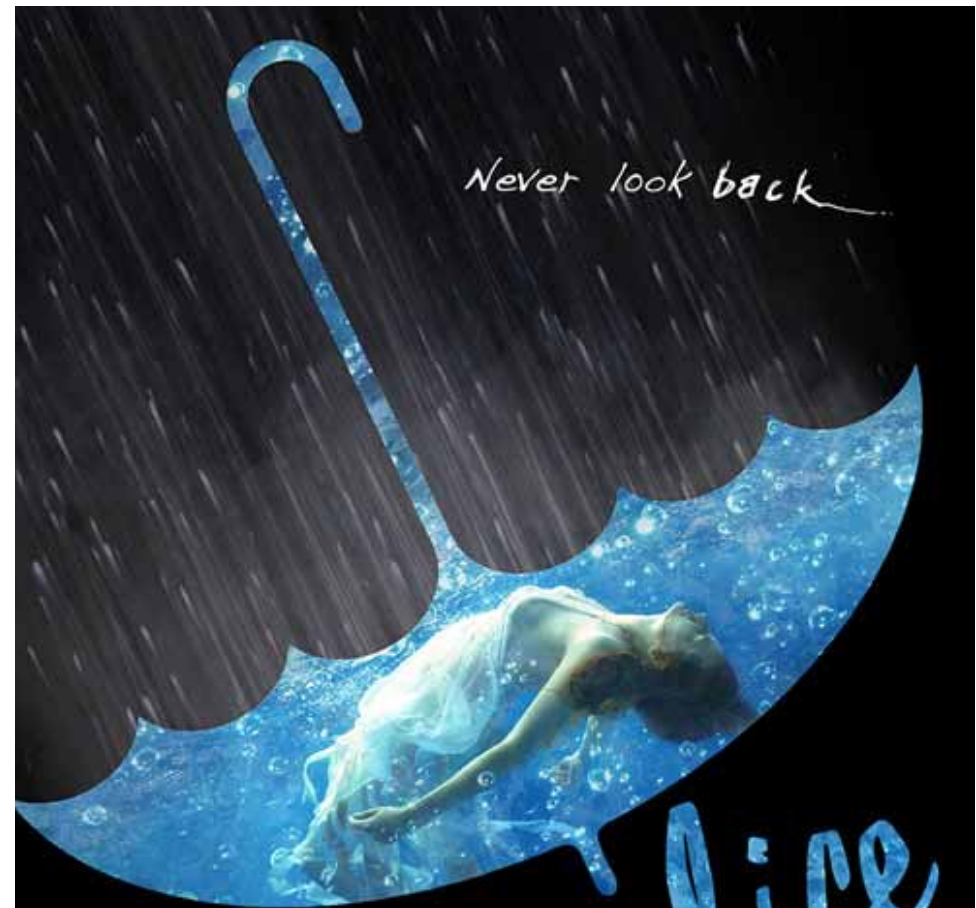
Sunday 9am - 3pm

Our Patio is OPEN!

993 South Cooper

Memphis, Tennessee 38104

www.StoneSoupCafeMemphis.com



written by
Sarah Ruhl

directed by
Jamie Boller

Eurydice

Feb. 9 - 25, 2018

Fridays and Saturdays @ 8:00

Sundays @ 2:00

New Moon Theatre Company
@ TheatreWorks • 2085 Monroe Ave.
www.NewMoonTheatre.org • 901-484-3467

This Play Will Be Presented In One Act

CAST *In order of appearance*

Actor	Character
Michelle Miklosey.....	Eurydice
Gabe Beutel-Gunn.....	Orpheus
Jeff Kirwan.....	Her Father
Doug Johnson.....	A Nasty Interesting Man/ The Lord of the Underworld
Lena Wallace Black.....	Loud Stone
Fiona Battersby.....	Little Stone
Wesley Williamson.....	Big Stone

ARTISTIC / MANAGEMENT STAFF

Director.....	Jamie Boller
Stage Manager.....	Kayleigh Bondor
Lighting Designer.....	Mandy Kay Heath
Costume Designer.....	Austin Blake Conlee
Set Designer.....	J David Galloway
Movement Choreographer.....	Brittany Church
Sound Designer & Original Music.....	Joe Johnson
Technical Director.....	Jake Lacher
Assist. Stage Manager/Stage Crew.....	Analyse Capodiferro
Props.....	Laurie Boller
Lighting & Sound Engineer.....	Kayleigh Bondor
Costume Assist.....	Charlotte Conlee
Hair & Makeup Assist.....	April Rose Korpitz
Poster Graphics & Design.....	Andrew Chandler



*Dare
To Be
Different!*

19 N. Cooper, Memphis
901-725-0521

**CALMING
INFLUENCE**
MASSAGE & BODYWORK



Relax... It's Midtown

**Now adding Facials and Waxing
to our amazing range of services!**

276-9423 • 74 North Cooper
www.CalmInfluence.com



Please turn
off all cellular
phones, chim-
ing watches or
any other noise
creating
devices.

Texting or viewing texts on
is not allowed during
performance.

*Photography or recording
devices of ANY kind are
not permitted and will be
strictly enforced.*

ANDREWCHANDLER.NET 

Andrew Chandler has been offering his
freelance services for more over a decade.
Customers are impressed with his accessi-
bility and extremely short turn around time
for projects.

Services Andrew Provides I nclude:



- I llustration
- Cartooning
- Graphic Design

"Andrew is an amazing graphic
artist and is very gifted at any-
thing he puts his mind to!"
~ New Moon

901-218-1311
www.AndrewChandler.net

Theatreworks would like to thank the following arts organizations that offer assistance through grants and arts programs.

ArtsMemphis®
Powering Authentic Assets.

thearts
heartoftheartsmemphis.org

 **TENNESSEE
ARTS
COMMISSION**
Cultivate. Create. Participate.

New Moon Theatre's 2017 - 2018 Season

Buried Child
by Sam Shepard
Oct. 20 - Nov. 5, 2017

Eurydice
by Sarah Ruhl
Feb. 9 - 25, 2018

Othello
by William Shakespeare
May 4 - 20, 2018

For more info please visit
www.NewMoonTheatre.org

New Moon Theatre
Presents

Eurydice

By Sarah Ruhl
Directed by Jamie Boller

Produced by special arrangement with
Samuel French
235 Park Avenue South
Fifth Floor
New York, NY 10003

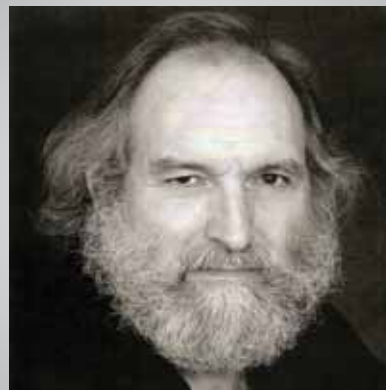
New Moon Theatre would like to thank the following, without whom this production could not have succeeded:

Tony Capodiferro, Jonathan Sellers, Dani Deutschmann, David Billard, Greg Boller, Bill Simmers, S. Front St. Antiques, Fallon Williams, Stage Door Productions, Hutchison School, Church of the Good Shepherd, Tom & Tracie Hansom, Theatre Memphis, University of Memphis, Fred Harpell, Germantown Community Theatre

New Moon Theatre Company Board of Directors

Melissa Andrews
Gregory Boller
Kell Christie
Gene Elliott
William Henry
Amy Van Doren Rust
Chris Sterling
Mystie Watson
Sylvia Wilson

This production is dedicated to
Ron Gordon.



B. Feb. 4, 1949, D. April 17, 2017

*“Say not in grief he is no more—
but live in thankfulness that he
was.” Hebrew Proverb*

New Moon Theatre Company was formed in 2004 to produce challenging works. It's debut production of *Fefu and her Friends* was a wonderful success.

New Moon would like to acknowledge the original four founding members, and thank them for their vision, dedication and hard work.

**Bert Godwin
Pam Goss
Eastern Hale
David Newsome**

ABOUT THE CAST



Fiona Battersby (*Little Stone*) is excited to be performing in her first show at New Moon. She was recently seen as Una in Quark Theatre's inaugural production of *Blackbird* and as Bassianus in *Titus Andronicus* at the Rose Playhouse, London. Originally from Chattanooga, Fiona relocated to Memphis to receive a BFA in Musical Theatre from the University of Memphis. For more info, visit www.FionaBattersby.com



Lena Wallace Black (*Loud Stone*) has a BFA in Theatre Performance from the UofM and is an Ostrander Award winning actress that works in the Outreach and Education department at Theatre Memphis. Some recent credits include *Stage Kiss* and *The 39 Steps* at TM and *Victory Blues* at Theatreworks. Lena has always enjoyed playing inanimate objects and would like to thank queen Jamie Boller for another opportunity to do so amongst a super cool crew of new and old friends.



Gabe Beutel-Gunn (*Orpheus*) is so happy to be performing in one of his favorite plays for you, and with such a great team of artists! He sends his sincere thanks to you for coming out tonight and hopes you will continue to support the vibrant and flourishing theatre scene in Memphis. "Special thanks go out to Jamie, Joe, Austin, Mandy, and David, as well as Kayleigh and Analyse. And as always, thanks to Rae for being the most supportive and loving partner anyone could ask for."



Doug Johnson (*A Nasty Interesting Man/The Lord of the Underworld*) has his BFA in theater from UofM. He was also the recipient of the Arezzo scholarship which allowed him to study commedia dell'arte and physical theatre and Arezzo Italy. This is Doug's second show with New Moon Theatre (*Rosencrantz and Guildenstern Are Dead*), as well as 2nd appearance in *Eurydice* (Big Stone). Since graduating, Doug has taught, directed, designed, and performed in a many theatres as will have him.

A NOTE FROM THE DIRECTOR...

Sarah Ruhl's *Eurydice* is a meditation on life, love, and loss—what it means to love someone is inevitably to lose them. Loosely inspired by the ancient Greek myth of Orpheus, the play is told from Eurydice's perspective, in a radically contemporary and surreal style. In today's political and social climate, empowering the female voice is more important than ever. Right now, it seems that our nation is experiencing collective grief for the state of our country's leadership. Not only is this story powerful on a personal level, but it also feels quite relevant on a political and social level.

As we explored the words and worlds of this play, the cast, crew, and designers also explored our own experiences of loss. We too wrote letters to people we have loved and lost. Playwright Sarah Ruhl opens her play with the following dedication: "This play is for my father." Ruhl lost her father while at college. Along with this dedication, I personally dedicate my work on this production to two people I lost too soon--my grandmother Marsha and friend Jordan. This play is for all the lost parents, grandparents, siblings, friends, and loved ones.

While conducting research for this project, I came across the following in Ariel Levy's *The Rules Do Not Apply* (a memoir following the traumatic loss of Levy's child--much in the same vein as Joan Didion's *Year of Magical Thinking*.) "I had no idea that all over the city, all over the world, there were people walking around sealed in their own universes of loss, independent solar systems of suffering closed off from the regular world, where things make sense and language is all you need to tell the truth." We all walk around in our own "independent solar systems of suffering," but Ruhl's play offers an alternative to this--90 minutes of shared love and grief. I hope you will enjoy watching the magic of this story unfold and take a moment to notice those sitting beside and across from you.

THE DIRECTOR



Jamie Boller (*Director*) is making her Memphis directorial debut with New Moon's production of *Eurydice*. Previous directing credits include Annie Baker's *Circle Mirror Transformation* (2015) and Neil Simon's *The Odd Couple* (2012). Jamie currently works for the Orpheum Theatre and runs an all-female arts collective, FEMMemphis, with her sister, Rae (www.femmehphis.com). Some of Jamie's favorite acting credits include:

Viola in *Shakespeare in Love* (POTS); Kate Middleton in *King Charles III* (POTS); Rosencrantz in *Hamlet* (New Moon); and Betty Boop 2 in *Collective Rage: A Play in Five Betties* (FEMMemphis). You can see Jamie this April as Mash in *Stupid F@&ling Bird* at Circuit Playhouse. "Many thanks to Gene and New Moon for letting her help tell this story and to Mom, Dad, Rae, and Woolf for all of their love and support."

ABOUT THE CREW

J David Galloway (*Set Design*) is thrilled to be working for New Moon Theatre once again! Previous New Moon credits include Guildenstern in *Hamlet* and set design for *The Woman In Black*. A native of Glasgow, Scotland, David has been designing and performing on Memphis stages for exactly ten years. Previous design credits include *Heathers: the Musical* (Circuit Playhouse), *Gem of the Ocean* (Hattiloo Theatre), *The Women of Lockerbie* (Freed Hardeman U) and *Hay Fever!* (U of Memphis, Ostrander winner for best set and props). David's next project is *Raisin in the Sun* at Hattiloo Theatre, and is in the process of forming his of theatre company, The After Midnight Theatre, with some other disturbed Memphis theatre folk. David wants to thank Jamie for bringing him on board and being an outstanding collaborator, and Christina, Piper, Mina and Binx for loving and supporting him with his crazy theatre life.

Mandy Kay Heath (*Lighting Designer*) is a freelance lighting designer based in Memphis. She moved to Memphis in 2011 and earned her MFA from the U of M. She is the lighting director at the Cannon Center and designs for many companies both in town and out of state. Recent work includes *Sunset Baby* and *Ruined* at Hattiloo, *Tuna Christmas* at Thingamajig Theatre Co. in Colorado, *The Little Mermaid* at Des Moines Playhouse in Iowa, *Falsettos* at Theatre Memphis and *Barefoot in the Park* at DFT. She is very excited for her second show with New Moon after the success of *Killer Joe*. *Eurydice* is one of Mandy's favorite shows and she feels very privileged to work with such a fine team.

Joe Johnson (*Sound Design/Original Music*) is honored to have the opportunity to compose music for New Moon's production of *Eurydice*. Joe works as a musician, producer, and actor. He was last seen as Billy in *POTS' Once*. "Kiss to Nichol for putting up with all the noise at home." For more visit www.SemiAverageJoe.com

Jake Lacher (*Technical Director*) is thrilled to be working on *Eurydice* with such a fun team! Jake is the Technical Director for Hutchison School and previously served at all levels of scenic production for companies including Utah Festival Opera, Tennessee Shakespeare Company, and the Rudi E. Scheidt School of Music. Jake received his BFA in Theatre Design/Technical Production from the University of Memphis in 2015. www.JakeLacher.com

In Loving Memory of Two Recent Departures.

Mary Barringer,
b. 08/30/1911 d. 11/16/2017
Mother of Sylvia Wilson,
New Moon Bard Member

George Elliott
b. 11/08/1925 d. 05/18/2016
Father of Gene Elliott,
New Moon Bard Member

ABOUT THE CAST



Jeff Kirwan (*Her Father*) is deeply humbled to be working with this supremely talented cast and crew. Jeff is a relative newcomer to the Memphis theatre scene, and was last seen as Tilden in NM's *Buried Child*. He would like to thank his wife, Kelly for her undying love and support (despite countless missed dinner dates), and his daughter, Bri for inspiring this performance more than she will ever likely realize. "Sarah Ruhl's dedication of *Eurydice* reads, 'This play is for my father.' I can think of no finer sentiment. This play is for you as well, Dad. I hope you didn't let them dip you in the river too long."



Michelle Miklosey (*Eurydice*) a New Jersey native but honorary Southern girl, is delighted to be working with New Moon for the 2nd time and alongside an amazingly talented cast & crew! She previously played Carol Cutrere in the New Moon production of *Orpheus Descending*. Michelle's other credits include: *Streetcar Named Desire*, *Doubt* and *The Heiress*. Endless love & thanks to Glen and Henry for allowing Michelle to miss many bath times. "Enjoy the show!!"



Wesley Williamson (*Big Stone*) is thrilled to make his New Moon Theatre debut with this talented team. He recently graduated from Southern Miss with his BFA in Acting and now teaches theatre at Horn Lake High School. Other credits include: Roland in *Constellations*, Robertson Aye in *Mary Poppins*, Ellard Simms in *The Foreigner*, and Ezekiel Cheever in *The Crucible*. "Thank you, Jamie for believing in me. Much love to Mom and Dad and Shannon."


theatreworks

TheatreWorks
March 9 - March 11
Memphis Comedy Festival

*Upcoming
Productions*

The Evergreen Theatre
February 23 - March 4
Inner City South

ABOUT THE CREW

Laurie Boller (*Props*) is excited to be part of such an amazing company, and working with her daughter, Jamie! Laurie is most often found stage managing shows -- previous credits at TM include, *Rasheeda Speaking; Judy, Just for You*; her previous assistant stage manager credits (also at TM) include, *39 Steps, Mother and Sons, Doubt, The Boy from Oz, The Submission, As You Like It, and The Royal Family*. Many thanks to her family: Greg, Rae and Jamie for their constant love and support.

Kayleigh Bondor (*Stage Manager*) an Ohio native, moved to Memphis nearly two years ago. She currently teaches 9-12th grade special education students in Whitehaven. She has previously served as a crew member on *The 39 Steps* and *Side Show* at TM. Most recently she was an Assist. Stage Manager for *Shrek: The Musical* at TM. She is excited to share her first stage managing experience with the phenomenal cast and crew of *Eurydice!* Catch Kayleigh next portraying Ima Jean in the upcoming ETC production *Daughters of the Lone Star State*.

Analyse Capodiferro (*Assist. Stage Manager/Back Stage Crew*) adores performing around town in shows like *Smoke on the Mountain* (Denise), and will soon be taking the stage as Miranda in *The Tempest* at GCT. Analyse also wants to explore stage managing as well as directing. She would like to thank Jamie for one of the most amazing experiences ever, Kayleigh for being on top at all times, and the cast for just being incredible, in all ways. She'd also like to thank her dad for lending his truck to help haul all the heavy set pieces and her mom for the early dinners and gas money!

Brittany Church (*Movement Choreographer*) is so grateful to have had the incredible opportunity to journey into Sarah Ruhl's world with this beautiful production team and cast of humans and stones, which has been magical from day one. Next up, she'll be back onstage at Theatre Memphis tapping it out with the cast of *42nd Street*. "May we never be afraid to write a letter or love an artist."

Austin Blake Conlee (*Costume Designer*) recently graduated with his BFA from the UofM. This past year, he won Ostrander Awards for his Costume Design & Wig Design for the UofM's production of *Little Shop of Horrors* and was also the 2017 recipient of the Larry Riley Rising Star Award. Some of his local credits include costume designing *A Streetcar Named Desire* and *The Glass Menagerie* at GCT, *Hamlet* and *Lettice & Lovage* at NW, *Sunset Baby* at Hatiloo, and *Mozart's Cosi Fan Tutte* for the UofM Opera. Having worked across the country as a costume designer for Stagedoor Manor in New York and as the wig & makeup supervisor at the Utah Shakespeare Festival, Austin is thrilled to be back in Memphis designing another show for New Moon! www.abcdesigns.me

GERMANTOWN HISTORIC THEATRE
1972 46 SEASONS 2018

LOST IN YONKERS
SEPT 1 - 17, 2017

HONKY TONK
Angels
OCTOBER 13 - 29, 2017

ALL CHILDREN'S THEATRE PRESENTS
I AM IRVING BERLIN
A MUSICAL REVUE
DECEMBER 1 - 10, 2017

WHO'S AFRAID OF VIRGINIA WOOLF
FEBRUARY 9 - 25, 2018

FIRST DATE
A NEW MUSICAL
MARCH 23 - APRIL 8, 2018

William Shakespeare's
THE TEMPEST
MAY 4 - 20, 2018

ARSENIC & OLD LACE
JUNE 15 - JULY 1, 2018

COMEDIES
MUSICALS
DRAMAS
CLASSICS

901.453.7447
GCTCOMEPLAY.ORG

3037 FOREST HILL IRENE RD. GERMANTOWN, TN 38138