

NEW MOON
THEATRE COMPANY

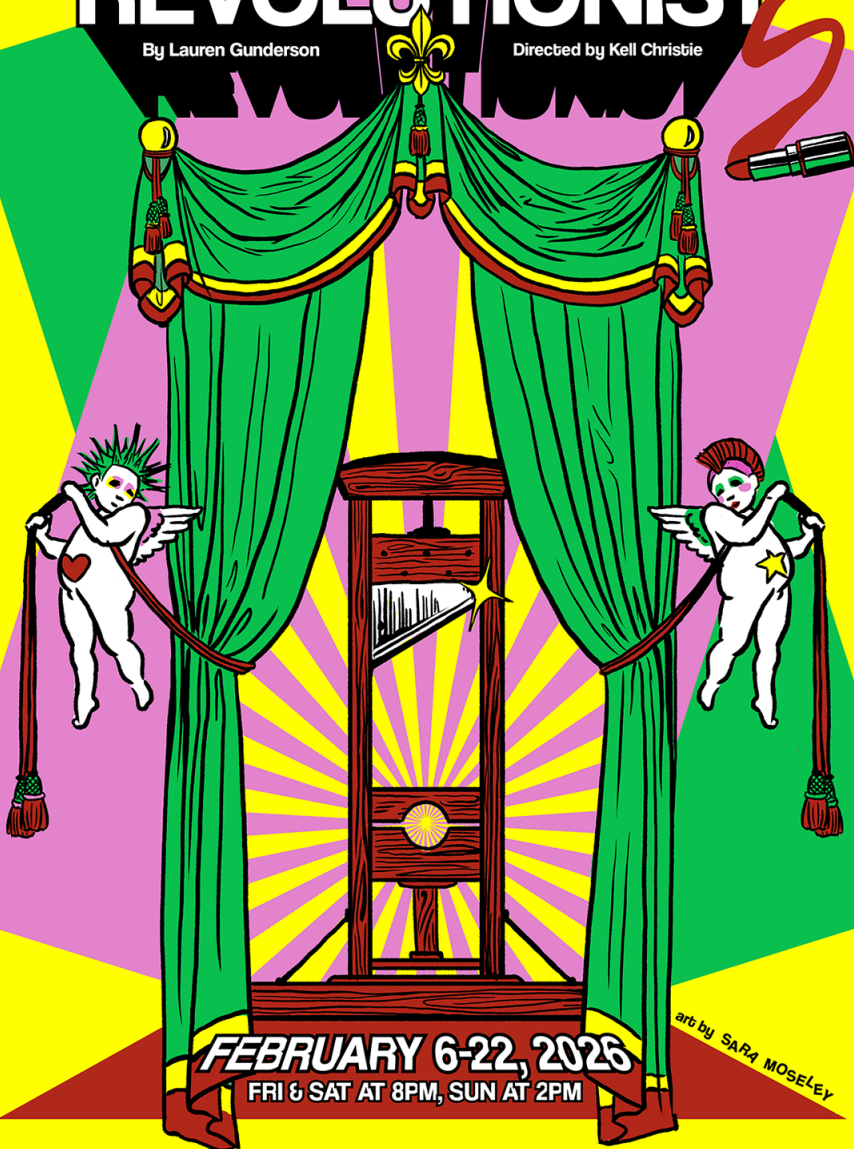
The

It's a true story. Or total fiction. Or a play about a play. Or a raucous resurrection.

REVOLUTIONIST

By Lauren Gunderson

Directed by Kell Christie



FEBRUARY 6-22, 2026

FRI & SAT AT 8PM, SUN AT 2PM

art by SARA MOSELEY

Theatreworks at the Square, 2085 Monroe Ave. (901)484 -3467, www.NewMoonTheatre.org | Season Sponsor Dorothy Kirsch

*Season Sponsor Dorothy Kirsch!
Thank you, Dorothy!*

The Revolutionists will be presented in two acts

CAST

Olympe.....Holly L. Derr

Charlotte.....Kaylea Jo Egnor

Marianne.....Hiawaratha Jackson

Marie Antoinette.....Melissa Walker

Fraternité/Swing.....KT Masters

Fraternité/Swing.....Kilby Yarbrough

ARTISTIC / MANAGEMENT STAFF

Director.....Kell Christie

Stage Manager.....Olivia Mittag

Lighting Designer.....Melissa Andrews

Set Designer.....Jabria Chanel

Costume Designer.....B'lynn Evans

Sound Designer.....Steven Gary

PropsKell Christie, Melissa Andrews

Dramaturg.....Julia Hinson

Set ConstructionTim Romine

Artistic Director.....Gene Elliott

Poster Graphics.....Sara Moseley

The Revolutionists

A Comedy

A Quartet

A Revolutionary Dream Fugue

A True Story

Written By Lauren Gunderson

Commissioned and first produced by

Cincinnati Playhouse in the Park.

THE REVOLUTIONISTS is presented by special
arrangement with Broadway Licensing, LLC,
servicing the Dramatists Play Service collection.

(www.dramatists.com)

DPS

*Season Sponsor
Dorothy Kirsch!
Thank you, Dorothy!*

ABOUT THE CAST



Holly L. Derr (*Olympe*) is the Head of Graduate Directing and Artistic Director at the University of Memphis. She was the founding producer of SKT, Inc. and has directed for The Know Theatre, Ashland New Plays Festival, Oregon Shakespeare Festival School Visit Program, and The Stonington Opera House. She has taught and directed at Smith College, The ART Institute at Harvard, The Brown University/Trinity Repertory Company Consortium, CalArts, UC Riverside, and Southern Oregon University. Holly has been published by The Atlantic, HowlRound, Ms. Magazine, Slate, and JDTC. She holds an MFA from Columbia University and a BA from UNC-Chapel Hill.



Kaylea Jo Egnor (*Charlotte*) is a second-year candidate for a Master of Fine Arts in Theatre Directing at University of Memphis. Currently, she is in pre-production to direct *The Night Witches* on the University MainStage this April. A coal miner's daughter from the hills of Appalachia, she is a proud graduate of West Virginia University, where she earned dual BAs in Theatre and Criminology. There, she was recognized as the 2023 Outstanding Graduating Senior by the Canady College of Creative Arts. She also plays on a co-ed softball team because, you know, balance. "Kisses to Arlo, Bingo, & Ryan!"

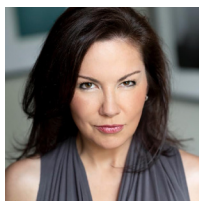


Hiawaratha Jackson (*Marianne*) Hello and welcome my name is Hiawaratha Jackson. I was born and raised in Chicago Illinois and moved to Memphis not too long ago. I am very excited about being in this play with this wonderful cast and crew. So please sit back and enjoy the show!!!!

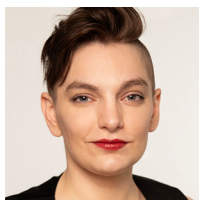


KT Masters (*Fraternité/Swing*) is thrilled to be working with New Moon Theatre again! She has worked in a variety of productions over the years both onstage and backstage. She was seen most recently in: *Dance Nation* (Vanessa/The moms; Ostrander Winner: Best Ensemble), *Lone Tree Lives 24 hour plays*, *A Monster Calls* (Swing) and *In a Dark Wood* (Rose). Off stage Kt is a Licensed Marriage and Family Therapist who is passionate about working with the mind, body and spirit. For more information about the services she offers you can visit her website: ktmasters.com She would like to thank her amazing cast and crew, husband, friends, family and cats for their endless support and enthusiasm!

ABOUT THE CAST



Melissa Walker (*Marie-Antoinette*) has been a Francophile ever since she read Alexandre Dumas' *The Three Musketeers* in middle school. She fell in love with *The Revolutionists* and Lauren Gunderson's character of Marie-Antoinette immediately upon reading the play and hopes you fall in love with this play too. Breathing life into Marie-Antoinette's character and shedding light on her often misunderstood world has truly been the greatest pleasure. The joy of working with the amazing and supremely talented women of the cast and crew (and the rest of the New Moon folk) has likewise been life-changing. May you laugh. and cry. and eat cake. and macarons. and cookies. Special thanks to Marie-Antoinette for the creation of chocolate bonbons by her physician. "Love to Kinon. So much. Trains were invented in 1803."



Kilby Yarbrough (*Fraternité/Swing*) is a multidisciplinary artist who holds a degree in theatre from Rhodes College. Most recently, they stage-managed *Not Alone Unhappy* with Quark. Favorite roles include Beth in *The Downing Girls* (Fourth Wall Down, St. Louis) and Rachel in the world premiere of *Ten Year* (King and Heinz, Nashville); favorite costume designs include *Black Orchid* (Collage Dance Collective) and *The Unencumbered* (Rhodes College). They are also a producing alum of the Fringe Lab with the National Women's Theatre Festival (Raleigh, NC). "Make art, foster equity, celebrate diversity."

Our next production running May 22 - June 7!

Collective Rage



A Play In 5 Betties; In Essence, A Queer And Occasionally Hazardous Exploration; Do You Remember When You Were In Middle School And You Read About Shackleton And How He Explored The Antarctic?; Imagine The Antarctic As A Pussy And It's Sort Of Like That

**Written by
Jen Silverman**

**Directed by
Ann Marie Hall**

ABOUT THE CREW



Melissa Andrews (*Lighting Designer/Props*) (she/her) is excited to start the new year with New Moon! Her recent credits include *The Wedding Singer* at Bartlett Performing Arts Center, *Junie B. Jones: The Musical* and *Tuna Christmas* at Circuit Playhouse, and *The Drowning Girls* for New Moon Theatre Company. Melissa is also a member of New Moon's board and the McCoy Theatre Coordinator at Rhodes College.



Jabria Chanel (*Set Designer*) is a Memphis-based scenic designer and artist. She has collaborated with New Moon Theatre on numerous productions, including *The Minutes*, *A Particle of Dread (Oedipus Variation)*, and most recently, *The Drowning Girls*. *The Revolutionists* marks her first full scenic design project, bringing her eye for texture, detail, and immersive storytelling to the stage. A special thank you to New Moon Theatre, Gene Elliott, Chris Sterling, Director Kell Christie, and the entire production team for their guidance and support in bringing this story to life. Enjoy the show!



B'lynn Evans (*Costume Designer*) is a first year MFA candidate at the University of Memphis with a focus in costume design. B'lynn's prior design works include Costume Design for *Sweeney Todd: The Demon Barber of Fleet Street* at Cottey College, Costume Designer/Draper for *Home: A Faculty Dance Concert* at University of Memphis. She wants to thank her wife and fellow grad students at the University of Memphis for all their love and support.



Steven Gary (*Sound Designer*) (he/him) has designed and operated sound around town for 20+ years, for many theaters, high schools and churches. Two of his favorites to work on at Theatre Works are *Love Apples* (many years ago) and *12th Night*. Steven loves the quirky and experimental nature of this theatre and the audiences it reaches. He loves his wife Kell, his daughter Annabelle, and his dog Rosie, and the cat - well, he just tolerates that one.

New Moon Theatre 2025-2026 Season

Oct. 17 - Nov. 2

The Drowning Girls

By Beth Graham

Directed by Aliza Moran

Feb. 6 - 22, 2026

The Revolutionists

By Lauren Gunderson

Directed by Kell Christie

May 22 - June 7, 2026

Collective Rage

By Jen Silverman

Director Ann Marie Hall



*Upcoming
Productions*

TheatreWorks
@ Overton Square

March 6 - 8
Bluff City Liars
TBA

TheatreWorks
@ The Evergreen Theatre

March 27 - Apr 19
Friends of George's
TBA



**Please turn off all cellular
phones, chiming
watches or any other
noise creating devices.**

Texting or viewing texts on is not allowed during
performance.

*No photography or recording devices
allowed of ANY kind.*

ABOUT THE CREW



Julia Hinson (*Dramaturg*) (she/her) is a theatre artist with extensive experience as a director, actor, and educator. She holds an MFA in Theatre Directing from the East 15 Acting School at the University of Essex and has worked on productions both locally and internationally. Julia is thrilled to be working with New Moon Theatre Company again, having previously designed props for *The Minutes*, *Reefer Madness* and performed in *Small Mouth Sounds* and *Shockheaded Peter*. She is the Executive Director and Founder of LoneTree Live, a resident company at TheatreWorks. www.lonetreelive.com



Olivia Mittag (*Stage Manager*) is thrilled to be part of another exciting New Moon show, especially in this season highlighting strong women! This is her second New Moon show, having previously stage-managed *A Particle of Dread*. Other past favorite credits include stage manager for *Chicago*, *Ride the Cyclone*, and *Into the Woods* with the UofM, ASM for *The Nutcracker* with Ballet Memphis, and ASM for *Mary Poppins* and *The Play That Goes Wrong* with Theatre Memphis. She would like to thank this wonderful team for making this show such a joy! Love always to her people, who she would revolt with any day.



Tim Romine (*TD/Set Construction*) (he/him) is a MacGyver type of a genius when working on design ideas! He has worked with New Moon several times. For *Evil Dead the Musical* he was instrumental in developing the blood delivery devices. Tim appeared in *Quills* playing Lunatic Bouchon, and with *Buried Child* he did Prop design. He also works with Absent Friends doing Prop design and fabrication.



Chris Sterling (*Consultant*) has designed the sets for *The Minutes*, *Lizzie 2024*, *The Squirrels*, *Small Mouth Sounds*, *Misery*, *Shockheaded Peter*, *Pillowman*, *Lizzie*, *Killer Joe*, *Haint* (Ostrander winner for Best Set Design), *Bug* and *The Rainmaker*. He has been seen on several local stages over the years, and for NM he appeared in our production of *The Rainmaker*. He has also appeared in *Secret Garden*, *Newsies* and *The Importance of Being Earnest* at Theatre Memphis; *The Hollow* and *The Mousetrap* at GCT.

ABOUT THE DIRECTOR



Kell Christie (*Director/Props*) is an area director and actor, the fine arts program chair at Houston High School, and the former Artistic Director at Theatre Memphis. Past acting credits with New Moon include Emelia in *Othello*, Regan in *King Lear*, and RC in *Bug*; directing credits include *Lizzie*. Other productions she's directed include *Master Class*, *Our Town*, *Amadeus*, *Jesus Christ Superstar*, *42nd St.*, and *Fiddler on the Roof*. Other acting roles include Frauline Schneider, *Cabaret*, Meridith Parker, *Bat Boy, the Musical*, and Ouisa, *Six Degrees of Separation*. She is the recipient of several Ostrander award nominations, and has served on many panels and committees for arts and arts education in Tennessee.

NEW MOON
THEATRE COMPANY

FUND THE CHAOS!

Scan this QR Code
to be taken to
our donation page



Theatre this loud isn't free.
Small theatre lives or dies on
your support. Whether it's \$5
or \$500, your donation keeps
New Moon alive, weird, and
uncensored.

Fuel the movement!

Thank you so much!
We hope you enjoy the show!



high expectations aerial arts

- Classes
- Aerial Arts for Beginners
- Parties
- Youth Program & Performance Troupe
- Aerial Arts Summer Sessions for Kids
- And Much More!

319 Cumberland Street, Memphis, TN 38112

www.highexpectationsaerialarts.com



CALMING
INFLUENCE
MASSAGE & BODYWORK



Relax... It's Midtown

Offering many wonderful services such as:
therapeutic massage, salt glows, foot baths,
and more!

276-9423 • 74 North Cooper
www.CalmInfluence.com

Germantown Community Theatre

SEASON 54

"HADESTOWN" Teen Edition

Jul 24th - Aug 3rd, 2025

at The KROC Center

Director - Christina Hernandez

Music Director - Adam Jeffrey

Choreographer - Abbie Martin

"NUNSENSE" the Musical

Sept 12th - 28th, 2025

Director - Elizabeth Perkins

Music Director - Eileen Kuo

Choreographer - Christi Hall

Sponsors Rusty & Donna Chandler Newman

"FRANKENSTEIN"

adapted by Nick Dear

Oct 23rd - Nov 2nd, 2025

Director - James Kevin Cochran

Stage Manager - JJ Townsend

"ANNIE JR." the Musical

Dec 5th - 21st, 2025

Director - Rose Blakeman

Sponsored by The Kiwanis Club of Germantown

"THE HOUSE"

by Savannah S. Miller

Jan 28th - Feb 1st, 2026

Creative team collaboration with
Cazateatro Bilingual Theatre Group

"GODSPELL" the Musical

Feb 27th - Mar 15th, 2026

Director - Jaelyn Suffel

Music Director - Nathan McHenry

Choreographer - Daniel Stuart Nelson

"JULIUS CAESAR"

all female cast

Apr 17th - May 3rd, 2026

Director - Meghan Lisi Lewis

Sponsor Alia Wealth Partners

"FALSETTOS"

William Finn Musical

Jun 5th - 21st, 2026

Director - Jordan Nichols

Music Director - Gary Beard

Membership Packages save up to 40% off individual ticket prices!

Creative Partner Donors rewarded with tickets & invites!

www.gctcomeplay.org 901-453-7447



**Please turn off all cellular phones, chiming watches
or any other noise creating devices.**

Texting or viewing texts on is not
allowed during performance.

No photography or recording devices allowed of ANY kind.

THE GINGER'S BREAD & CO. BAKERY

Bravo! ...to the
cast & crew!

SOURDOUGH BREAD ▪ BAGUETTES ▪ CHALLAH ▪ CROISSANTS
PAIN AU CHOCOLAT ▪ COOKIES ▪ SCONES ▪ CUSTOM BAKING

1613 Union Avenue ▪ Memphis, TN 38104
(901) 870-3927 ▪ tgbreadco@gmail.com

thegingersbread.com ▪ Follow us  



*Special Thanks to Everyone Who
Gave Us Amazing Assistance!
We Couldn't Have Done It Without
You!*

University of Memphis Department
of Theatre and Dance, Sam Weakley,
The Ginger's Bread Co., Rhodes
College, Playhouse on the Square,
Theatre Memphis, Germantown
Community Theatre.

Theatreworks would like to thank
the following arts organizations that
offer assistance through grants and
arts programs.

ArtsMemphis[®]
Powering Authentic Assets.

THE JENIAM  FOUNDATIONS



THOMAS W. BRIGGS FOUNDATION



THE MARSTON GROUP, PLC
CERTIFIED PUBLIC ACCOUNTANTS & ADVISORS