

# Cuddles

by  
**Joseph Wilde**

directed by  
**Tony Isbell**

starring  
**Tracie Hansom**  
**Hayley Hellums**

**Adult  
Content  
Warning**

NEW MOON  
THEATRE COMPANY

*Cuddles Preview  
Video*



**Oct. 21 thru  
Nov. 6, 2016**

**Fridays and Saturdays @ 8:00, Sundays @ 2:00**

**New Moon @ TheatreWorks • 2085 Monroe Ave.  
www.NewMoonTheatre.org • 901-484-3467**

**Regional  
Premiere!**

# TIME & PLACE

Present Day, England  
In and around Tabby's home.

This production is presented in one act.  
There will be no intermission.

## CAST *In order of appearance*

Tabby.....Tracie Hansom  
Eve.....Hayley Hellums  
Women in Black.....Caroline Zarlengo Sposto,  
Kristen Vandervort

## ARTISTIC / MANAGEMENT STAFF

Director.....Tony Isbell  
Stage Manager.....Leslie Lee Lansky  
Lighting Designer.....Melissa Andrews  
Costume Designer.....Robin Owens  
Set Design.....Chris Sterling  
Props.....Chris Sterling, Gene Elliott  
Sound Design.....Gene Elliott  
Fight Choreography.....Jyo Carolino  
Set Construction.....Ron Gordon, Chris Sterling  
Understudy for Eve.....Gretchen Pedersen  
Lighting & Sound Engineer.....Leslie Lee Lansky  
Poster Graphics & Design.....Gene Elliott



TheatreWorks

Nov. 11 - 20  
Cloud9 Presents  
*The Cemetery Club*

*Upcoming  
Productions*

The Evergreen Theatre

Oct. 22 - 30  
Bluff City Tri-Art presents  
*Intervention*

For more information go to [www.TheatreWorksMemphis.org](http://www.TheatreWorksMemphis.org)

New Moon Theatre  
Presents  
*The National American Production Premiere of*  
**Cuddles**

**By Joseph Wilde**  
**Directed by Tony Isbell**

*Cuddles* is produced by special arrangement in  
Memphis, Tennessee with Matt Connell Berlin  
Associates, 7 Tyers Gate London SE1 3HX  
+44 (0)207 632 5283  
[www.berlinassociates.com](http://www.berlinassociates.com)



**Please turn off  
all cellular  
phones, chiming  
watches or  
any other noise  
creating devices.**

Texting or viewing texts on  
cell phones is not allowed  
during performance.

Photography or recording  
devices of any kind are  
not permitted during the  
performance.

New Moon Theatre Company  
was formed in 2004 to  
produce challenging works.  
It's debut production of *Fefu  
and her Friends* was a  
wonderful success.

New Moon would like to  
acknowledge the original  
four founding members,  
and thank them for  
their vision, dedication  
and hard work.

**Bert Godwin**  
**Pam Goss**  
**Eastern Hale**  
**David Newsome**

# ABOUT THE CAST

---



**Tracie Hansom** (*Tabby*) last appeared with NM in *Orpheus Descending*. She has appeared on several stages throughout the Memphis area including *Hot L Baltimore* at Playhouse on the Square, *Circle, Mirror, Transformation* on Next Stage and *The Dixie Swim Club* at GCT, a performance that earned an Ostrander Award in the Ensemble category. Other credits include Irene Adler in *Sherlock Holmes: The Final Adventure*; Kari in *The Pavillion*; Anna in *Boston Marriage*; Corinna in *The House of Blue Leaves*; Cherie in *Bus Stop*; Lady Caroline in *Enchanted April*; and Lucy in *Dracula*.



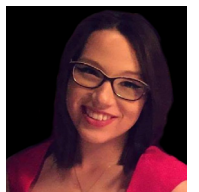
**Hayley Hellums** (*Eve*) is a junior at the University of Memphis. She is attending for a BFA in theatre with a concentration in performance. She would like to give special thanks to her parents and her grandmother, who have always been supportive of her in her desire to pursue acting as a career. She is very excited to be doing her first show with New Moon Theatre Company.



**Caroline Zarlengo Sposto** (*Lady in Black*) is a writer, actor, and bon vivant. She recently directed one of the scenes for Emerald Theatre Company's production of *Out of the Closet*. This is Caroline's second production with New Moon, she last appeared as the nurse in *Orpheus Descending*.



**Kristen Vandervort** (*Lady in Black*) is happy to be taking part in this production. She was most recently seen as the Ghost of Diana in *King Charles III* at Playhouse on the Square. Next up, she will be playing Leila in *Rope* at Germantown Community Theatre. She sends her thanks and love to her family.



**Gretchen Pedersen** (*Understudy*) is a freshman at the University of Memphis studying German and English. She has a passion for the Arts and has enjoyed this opportunity to work and observe this production of *Cuddles* by New Moon Theater. She hopes to continue with further productions in the future.

# ABOUT THE CREW

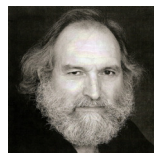
---



**Melissa Andrews** (*Lighting Designer*) is a freelance lighting designer and stage manager. Recent credits include *Titus Andronicus* and *The Laramie Project: Ten Years Later*, both for New Moon (lighting design), and *A Christmas Carol* at Theatre Memphis (stage manager). When she's not in the theater, Melissa can be found in the Academics Office at C.B.U, volunteering at House of Mews, and cheering on the Grizzlies with her husband and stepdaughter.



**Gene Elliott** (*Sound Design*) has directed many productions for New Moon including *Orpheus Descending*, *Frankenstein*, *Bug*, *'Night Mother*, *Rosencrantz and Guildenstern are Dead*, and *The Maids*. He has also appeared onstage at several theatres in Memphis. For New Moon Theatre he has appeared as J.D. in *The Rainmaker*, in *King Lear* he played Cornwall for which he won an Ostrander Award in Sound Design, and *Trip to Bountiful*.



**Ron Gordon** (*Set Construction*) has been performing on area stages for nearly thirty years, garnering four Ostrander awards (3 for acting, 1 for props) along the way, thus proving that perseverance will be rewarded.



**Leslie Lee Lansky** (*Stage Manager*) was previously seen in New Moon Theater Company in *Orpheus Descending* and then in *The Laramie Project: 10 Years Later*. Other credits include Freddy in *Marriage to an Older Woman* (Cloud 9), *Come Back To The 5 & Dime*, *Jimmy Dean*, *Jimmy Dean* (New Moon), Lisa in *The Lyons* (Circuit), *How to Succeed in Business* at Playhouse on the Square, Yenta in *Fiddler on the Roof* (TM), Elizabeth in *Catch Me if You Can* (BPACC), and Elsa in *Go Back for Murder* (GCT).



**Robin Owens** (*Costume Design*) has been the Resident Costume Designer at Germantown Community Theatre for 12 years. She has also done shows with Harrell Theater and Ridgeway High School. Robin has done several shows with New Moon Productions and is glad to be back again. She has been nominated for several Ostrander awards and won an Award for *Ruthless*.



**Chris Sterling** (*Set Design*) has designed the sets for *Haint* (Ostrander winner for Best Set Design), *Bug* and *The Rainmaker*. He has been seen on several local stages over the years, most recently as the Sheriff in NM's production of *The Rainmaker*. He has also appeared in *The Importance of Being Earnest* and *Fallen Angels* at Theatre Memphis; *The Hollow* and *The Mousetrap* at GCT.

# ABOUT THE PLAY

---

**British slang you will need defined:** “**Chuggers**” are licensed charity muggers or “chuggers” with colored tabards designating their charity around their necks. There’s not much love for chuggers, the infuriatingly chirpy fundraisers who patrol city centers in the hope of extracting donations.

The plot focuses on the dark and wrenching tale of two sisters who go on an emotionally harrowing journey: Eve is a teenage vampire who has never left her attic room and Tabby is her older, human sister who is also Eve’s tough, damaged and loving keeper. With no other family, Tabby has raised Eve as best she can.

## THE DIRECTOR

---



**Tony Isbell** (*Director*) is a long time actor and director in the Memphis area. His work has appeared in almost every venue in and around the city. He most recently appeared on the POTS stage in *King Charles III*, as the Leader of the Opposition. With New Moon he portrayed the Sheriff in *Orpheus Descending*. As a co-founder of the new Quark Theatre, Tony played the title

character in their inaugural production of *Krapp's Last Tape* at Theatre South. After *Cuddles*, his next directing assignment will be *The 39 Steps* at Theatre Memphis. As always, many thanks to his family: Marie, Michael, Katie, Jessie and John for their love, support and understanding over the years. He couldn't do this without them.



# GERMANTOWN COMMUNITY THEATRE PRESENTS 2016 - 2017 SEASON:



CELEBRATING 45 SEASONS

Theatreworks would like to thank the following arts organizations that offer assistance through grants and arts programs.

**ArtsMemphis™**  
Your support matters.

**thearts**  
heartoftheartsmemphis.org

T E N N E S S E E

**IN**  
**arts**  
COMMISSION

## New Moon Theatre's 2016 - 2017 Season

### *Cuddles*

by Joseph Wilde  
Oct. 21 - Nov. 6, 2016

### *Hamlet*

by William Shakespeare  
Feb. 3 - 19, 2017

### *Killer Joe*

by Tracy Letts  
May 5 - 21, 2017

For more info please visit  
[www.NewMoonTheatre.org](http://www.NewMoonTheatre.org)

New Moon Theatre would like to thank the following, without whom this production could not have succeeded:

**Andrew Chandler,  
Mark Rutledge,  
Tom & Tracie Hansom,  
Theatre Memphis,  
Central Christian Church,  
University of Memphis,  
Fred Harpell, Germantown  
Community Theatre**

## New Moon Theatre Company Board of Directors

Gregory Boller  
Kell Christie  
Gene Elliott  
Ron Gordon  
William Henry  
Amy Van Doren Rust  
Chris Sterling  
Sylvia Wilson