

# Night, Mother

NEW MOON  
THEATRE COMPANY

by  
**Marsha  
Norman**

directed by  
**Gene Elliott  
& John Reed**

**June 17 - 26, 2011**

Fridays & Saturdays @ **8:00 pm**, Sundays @ **2:00 pm**

**Theatreworks, 2085 Monroe Ave. in Overton Square**

Ticket Information: 484-3467 [www.NewMoonTheatre.org](http://www.NewMoonTheatre.org)

---

New Moon Theatre  
*Presents*

## 'Night, Mother

**by Marsha Norman**

**Directed by Gene Elliott & John Reed**

Produced by special arrangement with  
Dramatists Play Service  
440 Park Ave., South  
New York, New York 10016



**Please turn off all cellular phones,  
chiming watches or other noise  
creating devices.**

Texting or viewing texts on cell phones is not  
allowed during performance.

Photography or recording devices of any kind  
are not permitted during the performance.

## SCENES

---

Present day, Saturday night, 8 p.m. in  
Thelma and Jessie's house.

The play runs in one act.

## CAST

---

*In order of appearance*

Jessie.....Emily Burnett

Mother.....Sylvia Wilson

## ARTISTIC / MANAGEMENT STAFF

---

Directors.....Gene Elliott, John Reed

Master Electrician.....William Henry

Sound Engineer.....Amy Rust

Music Design.....John Reed

Set Construction.....Gene Elliott, William Henry,  
Don McCarrens, Jonathan Wilson,  
Sylvia Wilson, Emily Burnett

Props.....Sylvia Wilson, John Reed

TheatreWorks Manager.....Fred Harpell

Program & Poster Design.....Gene Elliott

## COMPANY BOARD MEMBERS

---

**Zac Cunningham** has appeared with New Moon (NM) in *Rosencrantz and Guildenstern are Dead*, *The Maids*, and *Lone Star*. He also produced, wrote and performed in *Look Away*. When he's not working on a production he can be found performing with his band Bloody Foot of Rock.

**Gene Elliott** received a B.A. in theatre from Eastern Kentucky University. Lately he has been focusing on directing such productions as *Some Things You Need To Know Before The World Ends*, *Rosencrantz and Guildenstern are Dead*, *The Empire Builders* and *The Maids*. Some of his past acting credits include *Looking For Normal* at Circuit Theatre and in *What The Butler Saw* with NM.

**William Henry** most recently appeared with NM in *Some Things You Need To Know Before The World Ends*, and *Rosencrantz and Guildenstern are Dead*. He is a rising senior at U. of M. pursuing a B.F.A. in Theatre Performance. His University credits include *Twelve Angry Jurors*, *Dark of the Moon* and *Back of the Throat*.

**Don McCarrens** has been with NM for a couple of years and become a hard working member. He has performed in *Loot*, *Look Away*, *The Empire Builders* and *Trouble in Mind*.

**John Reed** appeared in NM's production *Rosencrantz & Guildenstern Are Dead*. He has published poetry in publications such as *Poetry* and *The Parts Review* and in the anthologies *Ten Poets* and *Ravishing DisUnites: Real Ghazals in English*.

**Amy Van Doren** joined NM's board after appearing in *Death and The Maiden* and in her most recent role she was covered with blood, fighting zombies in *Look Away*. Some of her other acting credits include *Macbeth*, *The Ribbon Mill*, and *Outskirts of Heaven*.

**Sylvia Wilson** really enjoys working behind the scenes as stage manager, but when we can drag her onstage she really shines. Some of her past acting credits include *The Birthday Party*, Mug in *The Empire Builders*, *Trouble in Mind* and *The Castle* playing the Inn keeper's wife. We are encouraging Sylvia to write a play based on her countless years attending Elvis vigils.

New Moon Theatre Company was formed in 2004 to produce challenging works. It's first debut production of *Fefu and her Friends* was a wonderful success.

New Moon would like to acknowledge the original four founding members, without whom this production would not exist.

**Eastern Hale**  
**Pam Goss**

**David Newsome**  
**Bert Godwin**

## ABOUT THE CAST



**Emily Burnett** (*Jessie*) is joining NM for her third production, others being, *Trouble in Mind* and *Death of a Salesman*. She has her associates in Speech and Theatre from Northwest MS Community College. There, she participated in many of the productions such as *Crimes of the Heart* for which she won an "Allie" award and received an Irene Ryan acting nomination. Other productions include *She Stoops to Conquer*, *A Midsummers Night's Dream*, *Our Town* and *How to Succeed in Business Without Really*

*Trying*. After Northwest she directed *Barefoot in the Park* for which she won another "Allie" for directing and best comedy. She then attended The American Musical and Dramatic Academy in New York. Recently, she could be seen in Bartlett Community Theatre's production of *Steel Magnolias*. She has performed with Theatre Memphis in their production of *Ama-deus* and *A Christmas Carol*. Emily would like to thank Sylvia for this amazing experience. "I love you!"



**Sylvia Wilson** (*Thelma*) has been a loyal New Moon member since 2004 when she made her stage debut in *The Castle*. After getting a taste for theatre she has continued with the company learning and doing all aspects of productions, from building sets, stage managing, running lights and sound to appearing on stage. Some of Sylvia's past stage credits include *Trouble in Mind*, *Birthday Party* and *My Mom's Butt*. Sylvia loves and excels at stage managing and helped our

most recent production of *Death of a Salesman* run seamlessly. When not participating in theatre you are likely to find her attending anything that has Elvis attached to it. She so appreciates Emily for all her hard work and loves their connection both on stage and off.

## ABOUT THE PLAY

The scene is the living room/kitchen of a small house, which is shared by Jessie and her mother Thelma. Jessie's father is dead; her loveless marriage ended in divorce; her absent son is a petty thief and ne'er-do-well; her last job didn't work out and, in general, her life is stale and unprofitable. As the play begins Jessie calmly shares with her mother some stark news. At first Thelma refuses to take her seriously, but as Jessie sets about tidying the house and making lists of things to be looked after, her sense of desperate helplessness begins to build.

Winner of the Pulitzer Prize and the Susan Smith Blackburn Prize. "...honest, uncompromising, lucid, penetrating, well-written, dramatic, and...unmanipulatively moving..." — NY Magazine. "...a shattering evening..." — NY Times.

### *Unbecoming*

*Some souls cannot abide  
the strain of being various.  
They draw themselves aside,  
expressions spare and serious,  
cool and remote as hones  
that pare the selves down to none.*

John Richard Reed  
*Poetry*, February 1994





*Upcoming Productions*

Playhouse on the Square  
Presents:  
*Eleemosynary*  
July 15 - 31, 2011

Call 274-7139  
For more information go to  
[www.theatreworksmemphis.org](http://www.theatreworksmemphis.org)

CALMING  
INFLUENCE  
*MASSAGE & BODYWORK*



*Relax... It's Midtown*

Offering many wonderful services such as:  
Hot stone massage, therapeutic massage,  
salt glows, foot baths, and more!

**276-9423**  
74 North Cooper  
(near Overton Square)  
[www.CalmInfluence.com](http://www.CalmInfluence.com)



**Memphis  
Crisis  
Center**

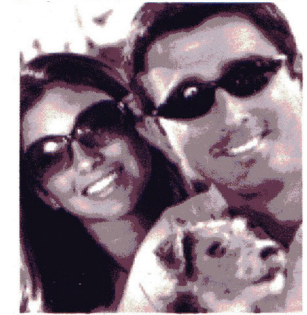
A United Way  
Agency and partner of UT Health  
Science Center

The Crisis Center is a volunteer-powered agency serving as an emotional lifeline through compassionate, non-biased, 24-hour live telephone support. Our trained volunteers assist callers with immediate help and link them with the long-term resources they need to cope and overcome.

**Crisis Center**  
901-274-7477 (Crisis7)  
[www.Crisis7.org](http://www.Crisis7.org)



Dr. Stephen R. Davis  
& Associates  
Optometrists



Bartlett Towne Centre 3314 Poplar, Suite 1  
373-4207 324-3189

*We Match Most Locally Advertised  
Prices On Contacts*

New Moon Theatre would like to thank the following, without whom this production could not have succeeded:

**Theatre Memphis, Mark Rutledge,  
Central Christian Church, Playhouse on the Square,  
University of Memphis, Fred Harpell,  
Mike Hanrahan, Jonathan Wilson,  
Lenny Green, Shaun Green**

Theatreworks would like to mention the following arts organizations that offer assistance through grants and arts programs.

**ArtsMemphis**  
Your support matters.

**thearts**  
heartoftheartsmemphis.org

T E N N E S S E E  
**IN**  
**arts**  
COMMISSION



For expertise and  
attention to  
detail, come to  
The Peddler.

*We have the answer to all  
your cycling needs.*

**Stop by any of our 3 locations:**

575 S. Highland Ave. 2095 Exeter Rd.  
Memphis, TN Germantown, TN  
(901) 327-4833 (901) 757-8485  
(901) 327-4834

1140 Germantown Prkwy  
Cordova, TN  
(901) 758-9770

[www.PeddlerBikeShop.com](http://www.PeddlerBikeShop.com)